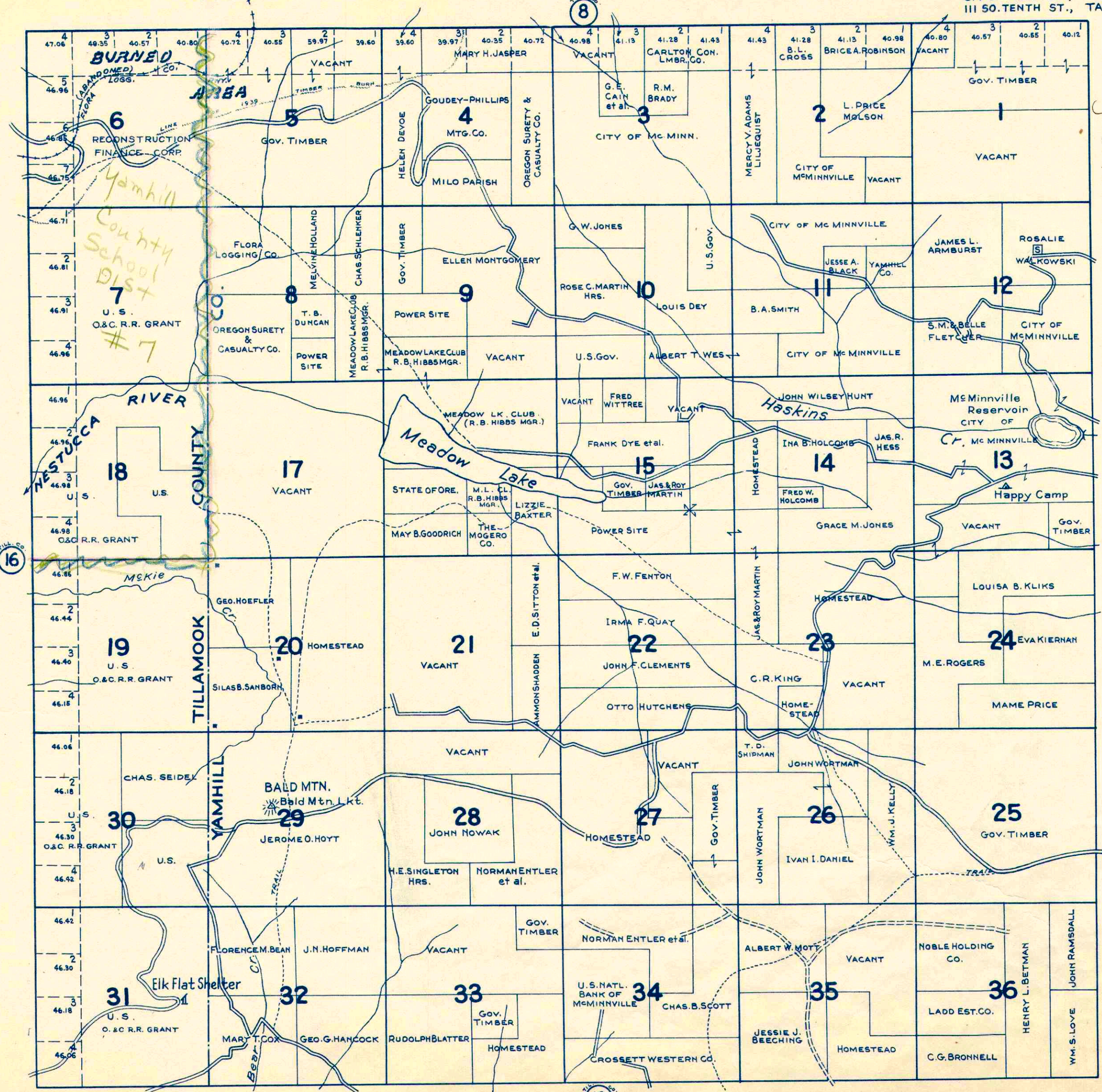


TOWNSHIP 3 S., RANGE 6 W.W.M. TILLAMOOK & YAMHILL CO'S. ORE.

SCALE 2 IN. = 1 MILE.

CHAS. F. METSKER CIVIL ENGINEER
514 S. W. OAK ST., PORTLAND, ORE.
111 50. TENTH ST., TACOMA, WASH.



Location marked with such line is in Yamhill School Dist. No. 7, but Blaine voting precinct, Tillamook County.

Blaine

- LEGEND -

- PAVED ROADS
- IMPROVED DIRT ROADS
- OTHER ROADS
- TRAILS
- RAILROADS
- ELE. RWYS.
- SCHOOLS